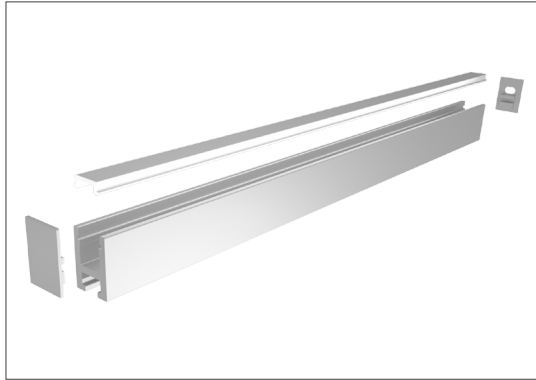
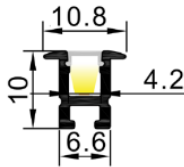


Model:LFRAME1110

Silver
 Black
 White
 CE
IP20



SIZE

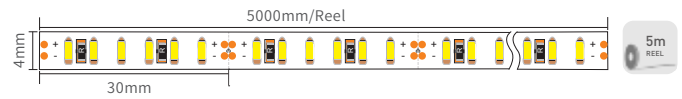


INSTALLATION



Material:	AL6063-T5
Surface:	Anodized/ Painting
PC cover:	Diffuser /Transparent /Opal/Black
Power:	7.2W/m
Input voltage:	24VDC
Lamp beads:	198LEDs/m (3014)
Lighting source width:	4 mm
Available lengths:	0.5-3m
Application:	Commercial lighting / Indoor lighting

LIGHTING SOURCE



APPLICATION



COVER

Trans/Opal/Diffuser
BP / BP / LFRAME1110E

Black
BP

BP= BAJO PEDIDO



END CAP

Hole W/O hole
TAPAA-1110E / TAPAC-1110E

CLIP

CLIP-1110E

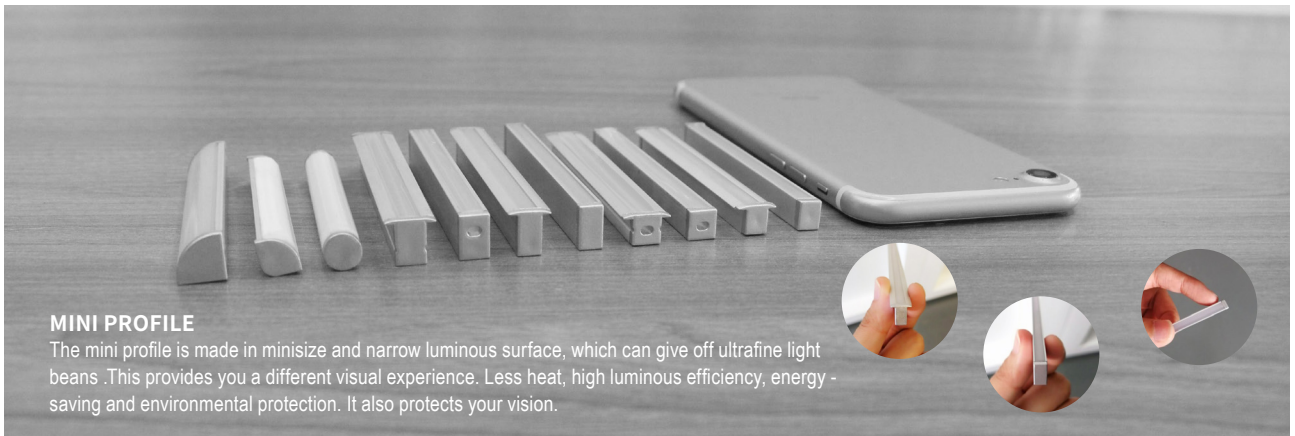
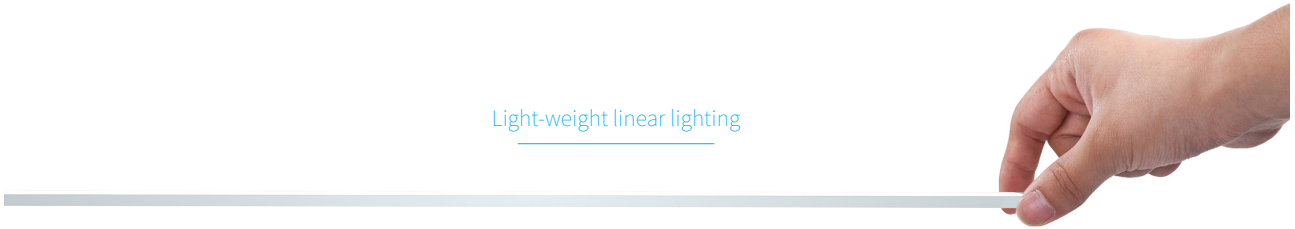


Model:LFRAME1110

Silver
 Black
 White
(ra19016)



Light-weight linear lighting



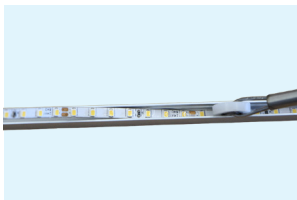
MINI PROFILE

The mini profile is made in minisize and narrow luminous surface, which can give off ultrafine light beams. This provides you a different visual experience. Less heat, high luminous efficiency, energy-saving and environmental protection. It also protects your vision.

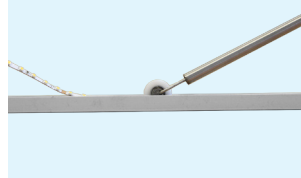
Easy to stick light strip



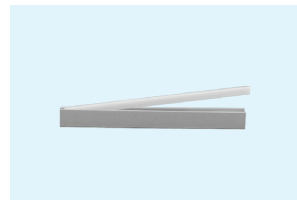
1. Put the light strip inside the aluminum profile



2. Use the rubber wheel to easily flatten the lamp strip and fix the inside of the light trough



3. Put the cover on aluminum profile



4. Insert the two end caps on the left and right sides and install them separately. The assembly is complete.

